



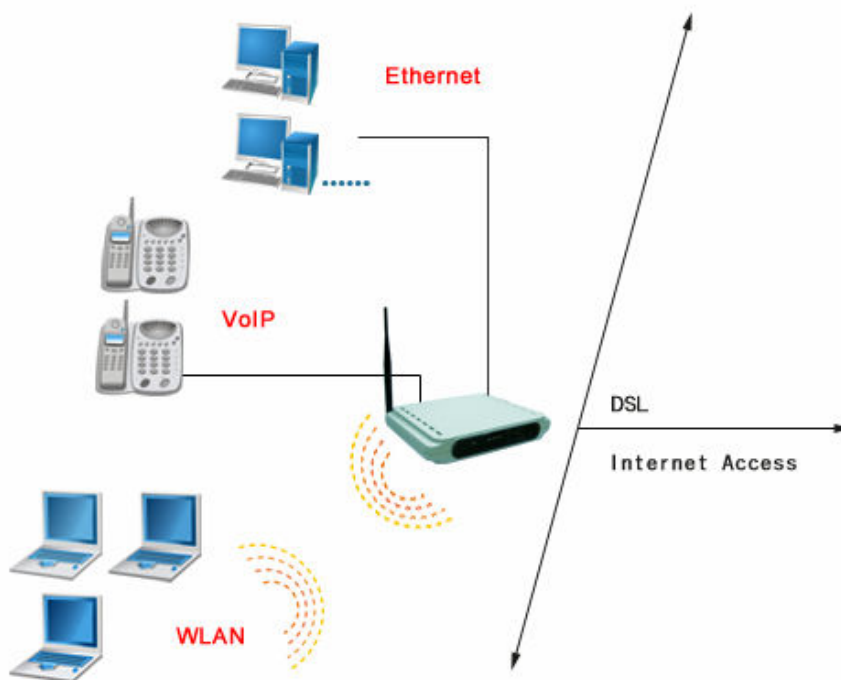
WADB-102G

High-Speed Wireless-G ADSL2+ router

Gemtek WADB-102G Wireless ADSL2+ router allows you to share the single account of Internet Access to delivery broadband service such as voice over IP and fast Internet access over ADSL. With build-in NAT, this Router allows up to 253 users on the Ethernet LAN simultaneously and up to 16 users on the 802.11g/b Wireless LAN simultaneously. 802.11g is the standard with throughput speeds of up to 54Mbps and advanced Orthogonal Frequency Division Multiplexing (OFDM). Offering several levels of security, it is built with 64/128-bit WEP encryption and 802.11i (WPA/WPA-PSK) for the wireless pass-through.

In case of home usage, WADB-102G acts as a router for Internet connection sharing. You can connect the Wireless ADSL Router to your Internet connection directly or connect to existing LAN by WAN port. The wireless gateway can share the network with your computers by wired LAN and wireless LAN.

With a web-based UI (User Interface), the WADB-102G is easy to setup and maintain. All functions can be configured with the UI via web browsers.



- Fully compliant with ANSI T1.413 Issue 2, ITU G.992.1, ITU G.992.2, ITU G.992.3, ITU G.992.5 and ITU G.994.1

- Fully compliant with Wi-Fi / 802.11b/g Client Devices.)

- Delivering the fastest possible data rate defined by the 802.11g specification

- Support 802.1X enhanced security with EAP-MD5 and EAP-TLS framework

General Specifications

- IP sharing feature allows multiple stations to access the internet using a single broadband

- System configuration and firmware upgrades available via web browser

Product Name 11G Wireless ADSL2+	Transmit Power +18dBm (Maximum) for WLAN +14dBm (Maximum) for ADSL
Model Number WADB-102G	Voice features N/A
Spreading 802.11b : DSSS 802.11g : OFDM	Gateway NAT, DHCP server, Port forwarding, Firewall 802.1d Spanning Tree Protocol (STP)
Frequency Range 2.4GHz~2.4835GHz (subject to local regulations)	LED Indicators ETHERNET LAN Activity (LINK / ACT) WLAN Activity (LINK / ACT) PPP Session / DSL Link VoIP Ready/Ack Power
Number of Channels USA, Canada and Taiwan - 11 Most European Countries - 13	Antenna 2 dBi and one antenna
Data Rate 802.11b: 11, 5.5, 2, 1 Mbps 802.11g: 54, 48, 36, 24, 18, 12, 9, 6 Mbps	Dimension Workingsample:200mmx150mm (approximately)
Standards IEEE 802.11b/g for Wireless LAN IEEE 802.3 for Wired LAN ANSI T1.413 Issue II for ADSL ITU G.992.1 (G.DMT) for ADSL ITU G.992.2 (G.lite) for ADSL ITU G.992.3 (ADSL2), Annex J,K (SADSLS), Annex L (RE-DSL) ITU G.992.5 (ADSL2+) ITU G.994.1 (G.HS) for ADSL	Weight Working sample only
Network Protocol TCP/IP, IPX/SPX, NetBEUI, DHCP Client PPTP, NetBIOS RFC2516 PPP over Ethernet (Option) RFC2684 Bridged IP over ATM RFC1577 Classical IP over ATM RFC2364 PPP over ATM AAL5 AAL5 UBR & CBR	Ports 4 Ethernet ports to 10/100 (Automatic MDI/MDI-X crossover) 1 RJ-11 twisted pair DSL line 1 USB 1.1 host for file sharing or print server
Security 64/128-bit WEP 802.1x (port-based security with RADIUS) MAC address filtering Association Clients Control WPA / WPA-PSK (TKIP, AES, TKIP+AES)	Temperature Range 0~40°C(operating), -20~65°C (storing)
	Humidity 15%~95%
	Power Adapter Input: AC 120/230V, 0.165A, 60/50Hz Output AC 15V, 1A