

WVADB-107GN

High-Speed ADSL2+ with VoIP Gateway, and WLAN 802.11n draft 1.0

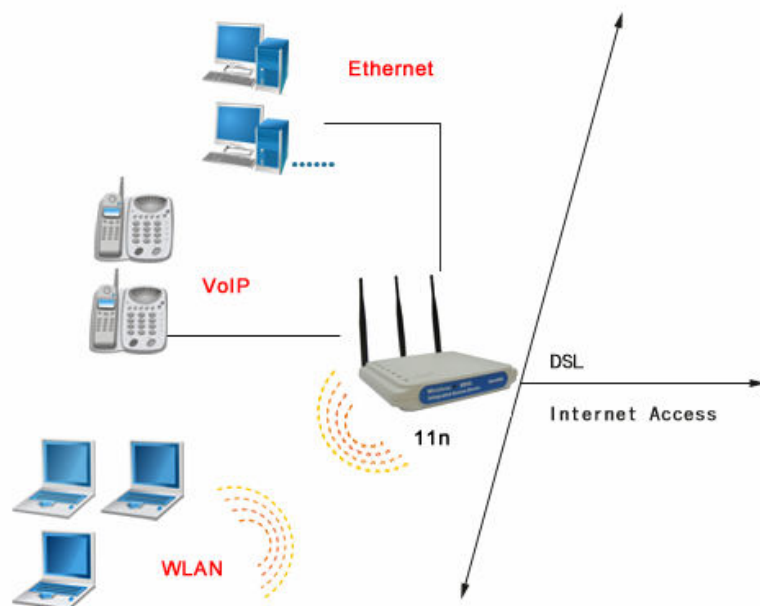


- Fully compliant with ANSI T1.413 Issue 2, ITU G.992.1, ITU G.992.2, ITU G.992.3, ITU G.992.5 and ITU G.994.1
- Conforms to IEEE 802.11b/g standards, and compliant to draft 802.11n specifications
- Support 802.1X enhanced security with EAP-MD5 and EAP-TLS framework
- IP sharing feature allows multiple stations to access the internet using a single broadband
- System configuration and firmware upgrades available via web browser

Gemtek WVADB-107GN Wireless ADSL2+ with VoIP Gateway allows you to share the single account of Internet Access to delivery broadband service such as voice over IP and fast Internet access over ADSL. With build-in NAT, this Router allows up to 253 users on the Ethernet LAN simultaneously and up to 16 users on the 802.11g/n Wireless LAN simultaneously. 802.11n draft 1.0 is the standard with throughput speeds of up to 300Mbps and advanced Orthogonal Frequency Division Multiplexing (OFDM).

In case of home usage, WVADB-107GN acts as a gateway for Internet connection sharing. You can connect the Wireless ADSL Router to your Internet connection directly or connect to existing LAN by WAN port. The wireless gateway can share the network with your computers by wired LAN and wireless LAN. At the same time you could also have the voice service with the build -in VoIP function.

With a web-based UI (User Interface), the WVADB-107GN is easy to setup and maintain. All functions can be configured with the UI via web browsers.



General Specifications

- Full compliant with ITU G.711, ITU G.729, ITU G.723.1 and control application for SIP

- 2 FXS,+ 1FXO(optional)

Product Name 11GN Wireless ADSL2+ with VoIP Gateway	Transmit Power +18dBm (Maximum) for WLAN +14dBm (Maximum) for ADSL
Model Number WVADB-107G	Voice features SIP compliance Supported codecs:G.711u/a,G.726,G.729,G.723AB. T.38 fax relay Echo cancellation according to ITU T.168
Spreading 802.11b : DSSS 802.11g : OFDM	Gateway NAT, DHCP server, Port forwarding, Firewall 802.1d Spanning Tree Protocol (STP)
Frequency Range 2.4GHz~2.4835GHz (subject to local regulations)	LED Indicators ETHERNET LAN Activity (LINK / ACT) WLAN Activity (LINK / ACT) PPP Session / DSL Link VoIP Ready/Ack Power
Number of Channels USA, Canada and Taiwan - 11 Most European Countries - 13	Antenna 2 dBi,3 Antenna
Standards IEEE 802.11g/n for Wireless LAN (Support 11n is on demand) IEEE 802.3 for Wired LAN ANSI T1.413 Issue II for ADSL ITU G.992.1 (G.DMT) for ADSL ITU G.992.2 (G.lite) for ADSL ITU G.992.3 (ADSL2), Annex J,K (SADSLS), Annex L (RE-DSL) ITU G.992.5 (ADSL2+) ITU G.994.1 (G.HS) for ADSL	Dimension Workingsample:200mmx150mm (approximately)
Network Protocol TCP/IP, IPX/SPX, NetBEUI, DHCP Client PPTP, NetBIOS RFC2516 PPP over Ethernet (Option) RFC2684 Bridged IP over ATM RFC1577 Classical IP over ATM RFC2364 PPP over ATM AAL5 AAL5 UBR & CBR	Weight Working sample only
Security 64/128-bit WEP 802.1x (port-based security with RADIUS) MAC address filtering Association Clients Control WPA / WPA-PSK (TKIP, AES, TKIP+AES)	Ports 4 Ethernet ports to 10/100 (Automatic MDI/MDI-X crossover) 1 RJ-11 twisted pair DSL line 1 USB 1.1 host for file sharing or print server RJ-11 VoIP Port*2 (Black) USB 1.1 Port*1 RJ-11 /45 ADSL WAN Port (Black)
Data Rate 802.11b 11,5.5, 2, 1 Mbps per channel, auto fallback For extended range 802.11g 54, 48, 36,24,18,12, 9, 6 Mbps per channel, auto fallback for extended range 802.11n Data Rate automatic fallback to 270, 240, 200, 180, 145, 120, 100, 54, 48, 36, 24, 18, 12,11, 9, 6, 5.5, 2Mbps and 1Mbps	Temperature Range 0~40°C(operating), -20~65°C (storing)
	Humidity 15%~95%
	Power Adapter Input: AC 120/230V, 0.165A, 60/50Hz Output AC 15V, 1A

