

WVADD-100G

High-Speed Wireless 11G ADSL2+ with VoIP Gateway

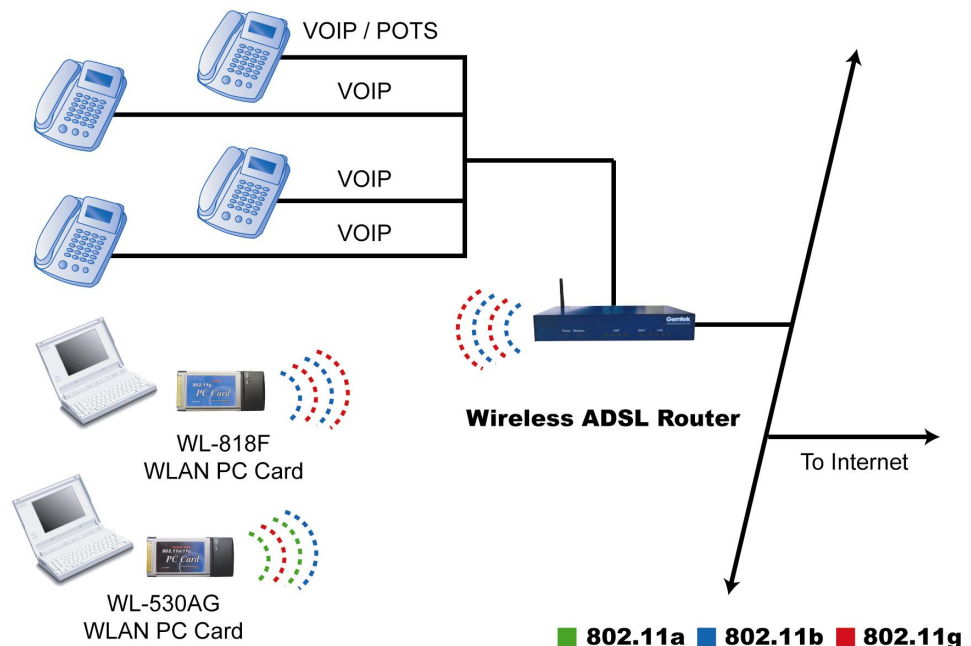


- Fully compliant with ANSI T1.413 Issue 2, ITU G.992.1, ITU G.992.2, ITU G.992.3, ITU G.992.5 and ITU G.994.1
- Fully compliant with Wi-Fi / 802.11b Client Devices
- Delivering the fastest possible data rate defined by the 802.11g specification
- Support 802.1X enhanced security with EAP-MD5 and EAP-TLS framework
- IP sharing feature allows multiple stations to access the internet using a single broadband
- System configuration and firmware upgrades available via web browser

Gemtek WVADD-100G 11G Wireless ADSL2+ with VoIP Gateway allows you to share the single account of Internet Access to delivery broadband service such as voice over IP and fast Internet access over ADSL(Optional) or LAN. With build-in NAT, this Router allows up to 253 users on the Ethernet LAN simultaneously and up to 16 users on the 802.11g/b Wireless LAN simultaneously. 802.11g is the standard with throughput speeds of up to 54Mbps and advanced Orthogonal Frequency Division Multiplexing (OFDM). Offering several levels of security, the WVADD-100G is built with 64/128-bit WEP encryption and 802.11i (WPA /WPA-PSK) for the wireless pass-through.

In case of home usage, WVADD-100G acts as a gateway for Internet connection sharing. You can connect the Wireless ADSL Router to your Internet connection directly or connect to existing LAN by WAN port. The wireless gateway can share the network with your computers by wired LAN and wireless LAN. At the same time you could also have the voice service with the build -in VoIP function.

With a web-based UI (User Interface), the WVADD-100G is easy to setup and maintain. All functions can be configured with the UI via web browsers.



General Specifications

- Full compliant with ITU G.711, ITU G.729, ITU G.723.1 and control application for SIP, MGCP and H.323
- 4 FXS, 1 Fail-over port

Product Name 11G Wireless ADSL2+ with VoIP Gateway	Voice features SIP compliance MGCP compliance H.323 compliance Supported codecs:G.711,G.726,G.729,G.723.1 Echo cancellation according to ITU T.168 Fail-over
Model Number WVADD-100G	
Spreading 802.11b : DSSS 802.11g : OFDM	
Frequency Range 2.4GHz~2.4835GHz (subject to local regulations)	Gateway NAT, DHCP server, Port forwarding, Firewall 802.1d Spanning Tree Protocol (STP)
Number of Channels USA, Canada and Taiwan - 11 Most European Countries - 13	LED Indicators ETHERNET LAN Activity (LINK / ACT) WLAN Activity (LINK / ACT) PPP Session / DSL Link VoIP Ready/Ack Power
Data Rate 802.11b: 11, 5.5, 2, 1 Mbps 802.11g: 54, 48, 36, 24, 18, 12, 9, 6 Mbps	Antenna 2 dBi
Transmit Power +18dBm (Maximum) for WLAN +14dBm (Maximum) for ADSL	Dimension 285 x 147 x 45 mm
Standards IEEE 802.11b/g for Wireless LAN IEEE 802.3 for Wired LAN (Option) ANSI T1.413 Issue II for ADSL ITU G.992.1 (G.DMT) for ADSL ITU G.992.2 (G.lite) for ADSL ITU G.992.3 (ADSL2), Annex J,K (SADSL), Annex L (RE-DSL) ITU G.992.5 (ADSL2+) ITU G.994.1 (G.HS) for ADSL	Weight 1.1Kg
Network Protocol TCP/IP, IPX/SPX, NetBEUI, DHCP Client PPTP, NetBIOS RFC2516 PPP over Ethernet (Option) RFC2684 Bridged IP over ATM RFC2684 Routed IP over ATM RFC1577 Classical IP over ATM RFC2364 PPP over ATM AAL5 AAL5 UBR & CBR	Ports 10/100 Mbps wired LAN*4 (Black) 10/100 (Automatic MDI/MDI-X crossover) RJ-11 VoIP Port*5 (Black) RJ-11 /45 ADSL WAN Port (Black)
Security 64/128-bit WEP 802.1x (port-based security with RADIUS) MAC address filtering Association Clients Control WPA / WPA-PSK (TKIP, AES, TKIP+AES)	Temperature Range 0~40°C(operating), -20~65°C (storing)
	Humidity 15%~95%
	Power Adapter Input: AC 120/230V, 0.165A, 60/50Hz Output AC 16V, 1A